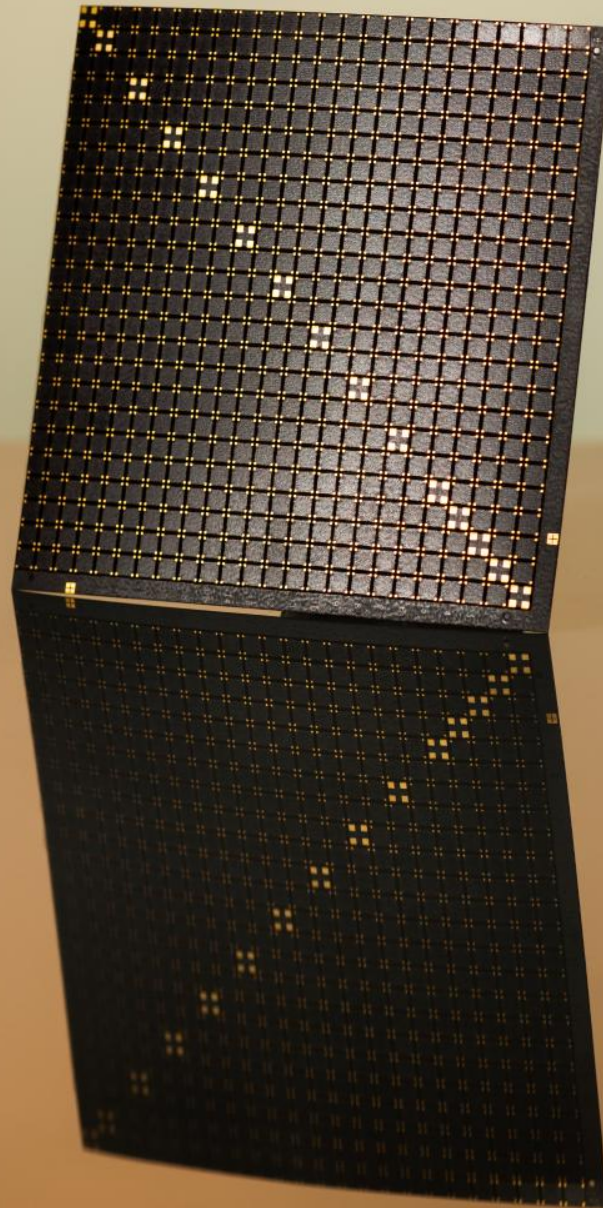
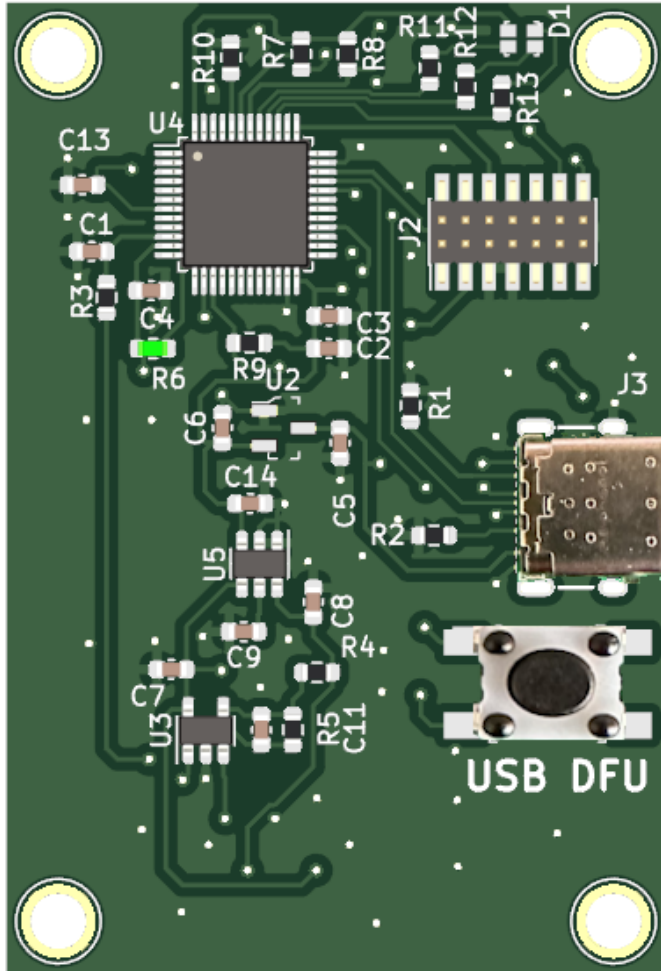


JON DE TECH

Small is Powerful

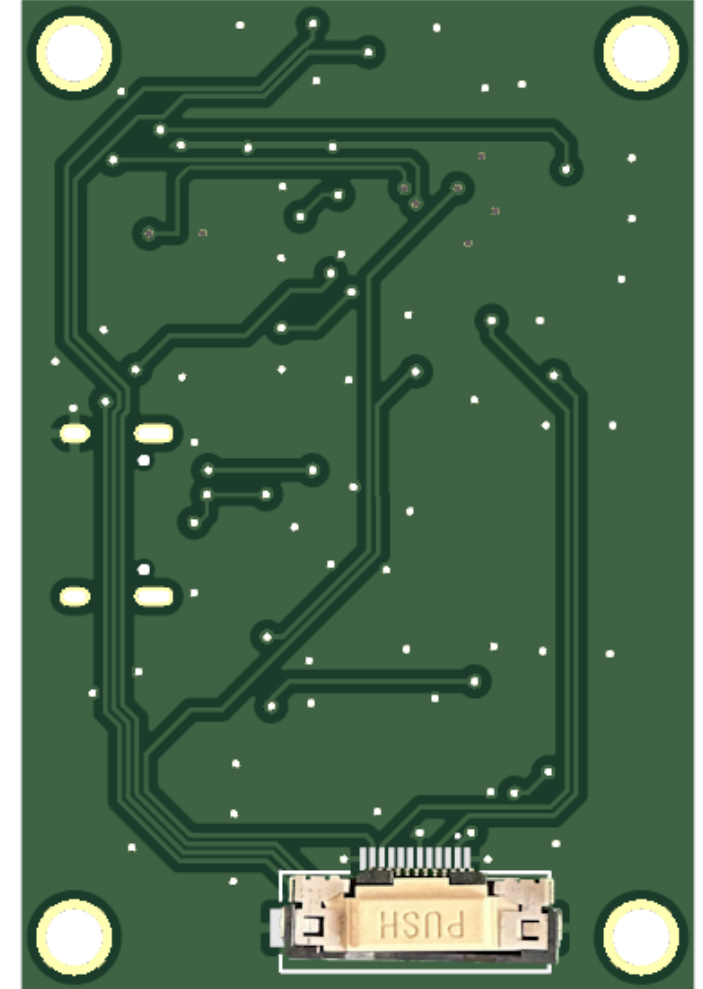


EVK Board



USB C Connector

USB FW
Upgrade

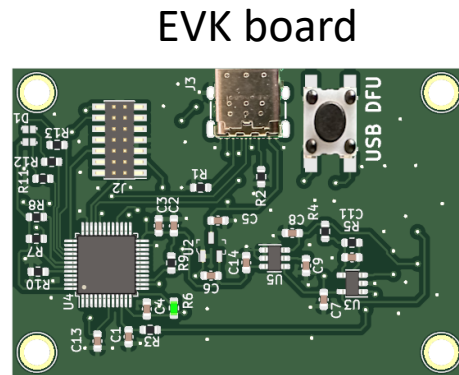


Module Connector

Hardware setup - Modules

Connect the module to the EVK board by pushing the module connector and inserting the module.
The correct orientation is shown in the images below

Top view



J30 module

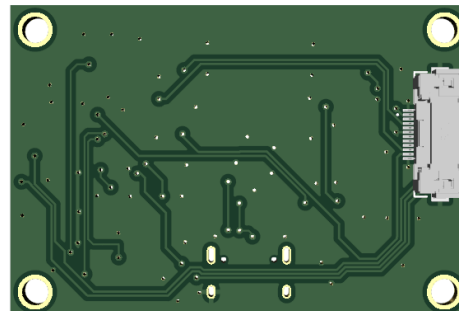


J40 module



J30 module

Bottom view



J40 module



J30 module

1. Download and run **JDT_Evaluation_Setup.msi** (<https://github.com/JonDeTech/Evaluation-Tool>)
2. Once installed, JDT Evaluation Tool is available via Start Menu
3. Insert Module board into EVK FPC Connector.
4. Connect USB cable between EVK board and PC
5. Launch JDT Evaluation Tool
6. First time, the tool will installation USB Drivers for the EVK board.
7. Select the right com port and press start