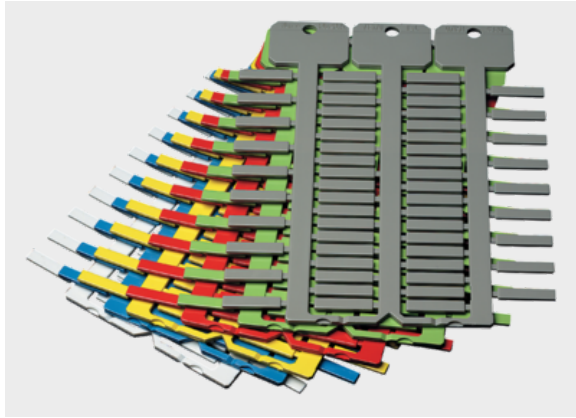


KS Label plate (single-line)



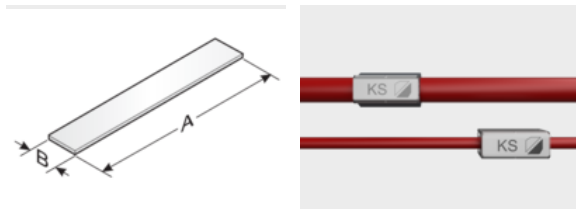
Product information

High-quality, halogen-free, universal label. The KS 4/x label is used with sleeves KT, KTH, KTHQ or holders KM, KMH, KMHQ or KTN on wires, cables, lines or conduits.

- Available in various lengths
- Available in different colours
- Large head labeling area

Only the long mat version labels are to be used with the mp-LM laser series.

Information, conformities and approvals



Article	Order No.	Color	RAL equiv.	Label size (A x B) mm	Printable area mm	Number of characters / lines	Quantity per frame	Software Article	Base plate	PU pcs.
Label length 12 mm, long mat design (L)										
KS 4/12 L 1)	86362026	White	9016	4 x 12	4 x 12	6 / 1	57	477	GP3 Single tree adapter 3	1026
KS 4/12 L 1)	86362018	Yellow	1018	4 x 12	4 x 12	6 / 1	57	478	GP3 Single tree adapter 3	1026
KS 4/12 L 1)	86362020	Red	2012	4 x 12	4 x 12	6 / 1	57	479	GP3 Single tree adapter 3	1026
KS 4/12 L 1)	86362022	Green	6018	4 x 12	4 x 12	6 / 1	57	480	GP3 Single tree adapter 3	1026
KS 4/12 L 1)	86362024	Blue	5012	4 x 12	4 x 12	6 / 1	57	481	GP3 Single tree adapter 3	1026
Label length 18 mm, long mat design (L)										
KS 4/18 L 1)	86362036	White	9016	4 x 18	4 x 18	10 / 1	57	472	GP3 Single tree adapter 3	1026
KS 4/18 L 1)	86362028	Yellow	1018	4 x 18	4 x 18	10 / 1	57	473	GP3 Single tree adapter 3	1026
KS 4/18 L 1)	86362030	Red	2012	4 x 18	4 x 18	10 / 1	57	474	GP3 Single tree adapter 3	1026
KS 4/18 L 1)	86362032	Green	6018	4 x 18	4 x 18	10 / 1	57	475	GP3 Single tree adapter 3	1026
KS 4/18 L 1)	86362034	Blue	5012	4 x 18	4 x 18	10 / 1	57	476	GP3 Single tree adapter 3	1026



KS Label plate (single-line)

Article	Order No.	Color	RAL equiv.	Label size (A x B) mm	Printable area mm	Number of characters / lines	Quantity per frame	Software Article	Base plate	PU pcs.
KS 4/18 L 1)	86362038	Gray	7038	4 x 18	4 x 18	10 / 1	57	562	GP3 Single tree adapter 3	1026
Label length 23 mm, long mat design (L)										
KS 4/23 L 1)	86362064	White	9016	4 x 23	4 x 23	12 / 1	34	459	GP3	1020
KS 4/23 L 1)	86362066	Yellow	1018	4 x 23	4 x 23	12 / 1	34	460	GP3	1020
KS 4/23 L 1)	86362068	Red	2012	4 x 23	4 x 23	12 / 1	34	461	GP3	1020
Label length 30 mm, long mat design (L)										
KS 4/30 L 1)	86362042	White	9016	4 x 30	4 x 30	16 / 1	34	462	GP3	1020
KS 4/30 L 1)	86362046	Yellow	1018	4 x 30	4 x 30	16 / 1	34	463	GP3	1020
KS 4/30 L 1)	86362040	Red	2012	4 x 30	4 x 30	16 / 1	34	464	GP3	1020
KS 4/30 L 1)	86362044	Green	6018	4 x 30	4 x 30	16 / 1	34	465	GP3	1020
KS 4/30 L 1)	86362045	Blue	5012	4 x 30	4 x 30	16 / 1	34	466	GP3	1020
Label length 10 mm, 4-line mat design (4ST)										
KS 4/10 4ST 2)	86361084	White	9016	4 x 10	4 x 10	5 / 1	64	A86	GP4	1024
Label length 12 mm, 4-line mat design (4ST)										
KS 4/12 4ST 2)	86361086	White	9016	4 x 12	4 x 12	6 / 1	64	A87	GP4	1024
KS 4/12 4ST 2)	86361087	Yellow	1018	4 x 12	4 x 12	6 / 1	64	430	GP4	1024
Label length 12 mm										
KS 4/12 1)	86361019	Orange	2011	4 x 12	4 x 12	6 / 1	57	60	GP3	1026
Label length 12 mm, high packaging density (ST)										
KS 4/12 ST 1)	86361072	White	9016	4 x 12	4 x 12	6 / 1	72	6ST	GP3	1296
KS 4/12 ST 1)	86361073	Yellow	1018	4 x 12	4 x 12	6 / 1	72	7ST	GP3	1296
KS 4/12 ST 1)	86361074	Red	2012	4 x 12	4 x 12	6 / 1	72	8ST	GP3	1296
Label length 12 mm, levelled foot (AF)										
KS 4/12-AF 1)	86361027	White	9016	4 x 12	4 x 12	6 / 1	57	6AF	GP3	1026
Label length 15 mm, 4-line mat design (4ST)										



KS Label plate (single-line)

Article	Order No.	Color	RAL equiv.	Label size (A x B) mm	Printable area mm	Number of characters / lines	Quantity per frame	Software Article	Base plate	PU pcs.
KS 4/15 4ST 2)	86361088	White	9016	4 x 15	4 x 15	8 / 1	64	A88	GP4	1024
Label length 18 mm, high packaging density (ST)										
KS 4/18 ST 1)	86361080	White	9016	4 x 18	4 x 18	10 / 1	72	1ST	GP3	1296
KS 4/18 ST 1)	86361081	Yellow	1018	4 x 18	4 x 18	10 / 1	72	2ST	GP3	1296
KS 4/18 ST 1)	86361082	Red	2012	4 x 18	4 x 18	10 / 1	72	3ST	GP3	1296
Label length 18 mm, levelled foot (AF)										
KS 4/18-AF 1)	86361037	White	9016	4 x 18	4 x 18	10 / 1	57	5AF	GP3	1026

1) GP3
2) GP4

Material properties



Polycarbonate (PC)

Thermal properties



Temperature / temperature range -40 °C - 130 °C

Fire properties



Fire classification V0

Technical information



Halogen-free

Classification



ETIM 9: EC001530
ECLASS 14: 27281102
UNSPSC 26.0801: 39131504

General technical data



Assembly method 1010011000000



KS Label plate (single-line)

Assembly method



Sleeve system



Cable tie system with sleeves



Clamping system



Self-clamping system

Labelling technology



Plotter



Laser



Inkjet