

Data logger – Energy Monitoring made simple



I/O Expansion modules



MR-DI4

P/N 1108341319

4 digital inputs



MR-DI10

P/N 1108311319

10 digital inputs



MR-SI4

P/N 11083913

4 S0 inputs



MR-AI8

P/N 11083213

8 configurable temperature or voltage inputs



MR-CI4

P/N 1108401332

4 current inputs 0-20 mA, 4 voltage inputs 0-10 V



MR-DO4

P/N 1108361321

4 relay outputs, manual control facility



MR-DOA4

P/N 110836132101

4 relay outputs



MR-TO4

P/N 11083013

4 triac output, manual control facility



MR-AOP4

P/N 1108371302

4 voltage outputs 0-10 V, manual control facility



MR-AO4

P/N 1108351302

4 voltage outputs 0-10 V



MR-MULTI I/O

P/N 11084313

4 digital outputs (Photo MOS)
4 digital outputs (relay)
11 digital inputs
6 universal inputs (temperature/voltage)
1 analog output (current)
2 analog output (voltage)
1 S0 input



MR-DIO4/2

P/N 1108331326

4 digital inputs, 2 relay outputs, changeover contacts, manual control facility



MR-DIO4/2S

P/N 110833132601

4 digital inputs, 2 relay outputs, NO contacts, manual control facility



MR-TP

P/N 11083813

6 digital inputs, 2 x two-level relay outputs, manual control facility



MR-SM3

P/N 11084113

3 analog inputs (230 V)
For captured by three 230 Volt current circuits
Current, voltage and power can be measured and determined



MR-LD6

P/N 11084413

6 analog inputs, 2 relay outputs

For monitor electrodes of leakage sensors or the fill level of fluid containers and to switch pumps or magnetic valves



- Jumper bar enables quick and easy installation of expansion modules



- Push buttons and LED's for manual operation and display



- Multi I/O with 24 digital and analogue inputs and outputs
- Adjustable if/than function



- Designed for easy implementation in electrical distribution boards with 45 mm cap
- Compact design (125 mm width) takes up less space in the switch cabinet



- Easy to install and low maintenance with Hardware Management, Electronic- and connection unit separable



- Configure and connect to WLAN Networks with the inbuilt WLAN Interface



- M-Bus Interface with "M-Bus-Master" enables connection to 80 M-Bus loads subscribers



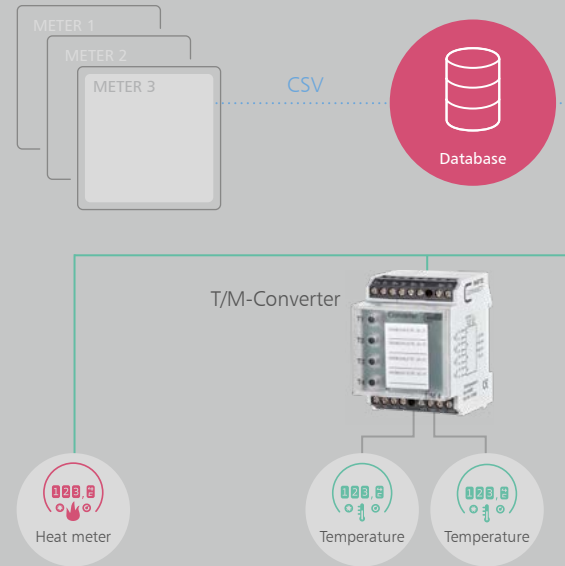
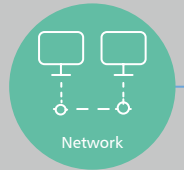
- 1 x Modbus RTU Interface for 32



- Dual Core ARM-Cortex-A7 Processor 1Ghz, 512 MB RAM, 4 GB Flash



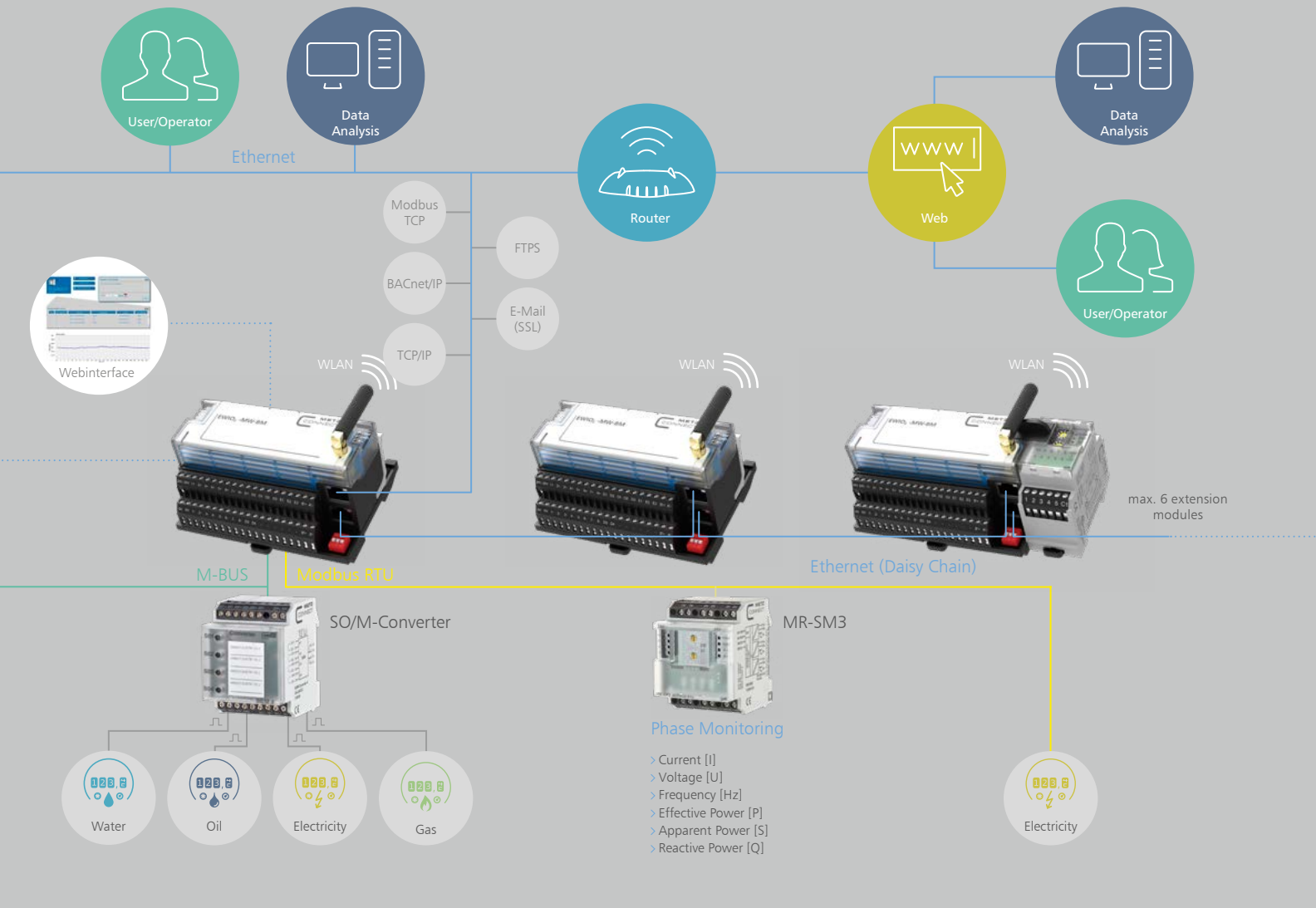
- 2 x Ethernet ports with Daisy Chain Functionality



The EWIO₂-M (Ethernet Web I/O 2nd generation M-Bus) is a powerful data logger designed to record and monitor energy and power consumption in buildings, industrial plants and systems. The multi-protocol capability of the Smart Metering Gateway is made possible with the many different interfaces and connections featured on the device. EWIO₂-M is designed to help implement energy management systems (according to DIN EN ISO 50001) in to buildings and increase energy efficiency by integrating MSR and HVAC technology.

The EWIO₂-M allows you to combine both the functions of energy monitoring and building/industrial automation in one device. The data logger interfaces include two Ethernet ports that offer daisy chain functionality to link multiple devices, as well as a WLAN interface* for connection to the LAN- or WLAN network (operating mode: infrastructure). In the Ad-hoc operation mode, the WLAN interface operates as an access point and thus allows the user to configure

EWIO₂-M from a mobile device (e.g. smartphone, tablet, notebook). The data logger can be integrated in a Modbus TCP* or BACnet/IP* network for control tasks. The configuration, parameter setting, and commissioning of the system takes place via an intuitiv web interface with a platform-independent web browser. Different meters such as electricity, water, gas, heat or other media can be connected and read at the M-Bus and Modbus RTU interfaces. The Recorded values can be sent (push) by E-Mail (SSL) and FTP (SFTP) or can be queried by FTP (SFTP), BACnet- or Modbus controller (pull). The integrated digital and analog inputs and outputs are used to connect sensors and actuators for different building or industrial automation tasks. Small applications can be created directly in the web interface. Complex automation tasks can be carried out by shell script programming or Modbus- and Bacnet control systems. An integrated micro SD memory card offers additional functionality to the EWIO₂-M and can be used to save particular settings, data/applications, or as a boot drive. In addition,



optional expansion modules for the conversion of physical properties such as temperature or S0 pulses into M-Bus telegrams, the collection of S0 double tariff meters, the expansion of I/O modules create countless expansion options for the system around the EWIO₂-M.

* Device mode

Typ	EWIO ₂ -M	EWIO ₂ -M-BM	EWIO ₂ -MW	EWIO ₂ -MW-BM
P/N	110930	110935	110931	110934
Mbus	x	x	x	x
Modbus	-	x	-	x
BACnet	-	x	-	x
WLAN	-	-	x	x

System and extension components

M-Bus Module and accessories

				
S0/M Converter 4 fold	S0/M Converter	S0/M Converter-IP65	T/M Converter 4 fold	T/M Converter-IP65
P/N 110556	P/N 11055601	P/N 11055601IP	P/N 110562	P/N 110562IP
4 S0 inputs	1 switchable S0 input, 2 S0 inputs	1 switchable S0 input, 2 S0 inputs	4 x temperature input	4 x temperature input
4 Channel S0/M-Bus Converter to record impulses from energy meters over a standardised interface according to DIN EN 62053-31 Class A	S0/M-Bus DT-Converter for recording double rate meters. Depending on the input wiring, impulses are saved in either counter register T1 or T2.	S0/M-Bus DT-Converter in IP65 housing for mounting on ceilings, walls or underfloor	Temperature/M-Bus Converter with 4 individually adjustable Channels. Preselected characteristic curves for PT100, PT500, PT1000, Ni100, Ni1000, NTC1k8, NTC10k, NTC 20k, KTY10 Sensors	Temperatur/M-Bus Converter with 4 channels housed in an IP65 housing for mounting on ceilings, walls and underfloor
				
MYD-4M-IP65	MYD-2M2V-IP65	MYD-1M1V	M-BUS CT SOFTWARE	NETZGERÄT NG4 HS
P/N 11056301	P/N 11056302	P/N11056303	www.metz-connect.com	P/N 110561
6 x M-Bus, 2 x voltage	4 x M-Bus, 4 x voltage	2 x M-Bus, 2 x voltage	-	In 110-240 V AC 50/60 Hz, Out 24 V DC (SELV)/ 700 mA; 16 W
IP65 M-Bus distribution unit for M-Bus networks with detachable spring clamp terminal blocks with printed contact designation. An uninterrupted M-Bus current measurement is possible. Enclosure features a quick action locking system and is sealable. 6 x M-Bus, 2 x voltage	IP65 M-Bus distribution unit for M-Bus networks with detachable spring clamp terminal blocks with printed contact designation. An uninterrupted M-Bus current measurement is possible. Enclosure features a quick action locking system and is sealable. 4 x M-Bus, 4 x voltage	IP65 M-Bus distribution unit for M-Bus networks with detachable spring clamp terminal blocks with printed contact designation. Suitable for decentralized mounting on DIN TH35 rail according to IEC 60715. 2 x M-Bus, 2 x voltage	M-BUS CT configuration tool for all METZ CONNECT M-Bus Components	The NG4 provides the I/O devices from METZ CONNECT with a regulated voltage of 24 DC/16 W. The secondary voltage can be tapped at a pluggable terminal block and at the screw-type terminal block.



WLAN antenna

P/N 11094830

Antenna with magnetic base
Cable length 3m, SMA-Socket

METZ CONNECT GmbH is member of the following organizations and associations.



METZ CONNECT GmbH

Im Tal 2
78176 Blumberg
Germany

Phone +49 7702 533-0
Fax +49 7702 533-189

info@metz-connect.com
www.metz-connect.com

METZ CONNECT USA Inc.

200 Tornillo Way
Tinton Falls, NJ 07712
USA

Phone +1-732-389-1300
Fax +1-732-389-9066

METZ CONNECT France SAS

28, Rue Schweighaeuser
67000 Strasbourg
France

Phone +33 3886 17073
Fax +33 3886 19473

METZ CONNECT Zhongshan Ltd.

Ping Chang Road
Ping Pu Industrial Park
Sanxiang Town
Zhongshan City, 528463
Guangdong Province
China

Phone +86 760 86365 055
Fax +86 760 86365 050

METZ CONNECT Asia Pacific Ltd.

Suite 1803, 18/F
Chinachem Hollywood Centre,
1 Hollywood Road, Central
Hong Kong

Phone +852 26 027 300
Fax +852 27 257 522

