

RoHS Compliant

REV	SIGN	DATE	DESCRIPTION	APPROVER
A		2024.08.30	Initial Release	Shao Bo

*THIS IS CAD DRAWING, DO NOT REVISE MANUALLY!!!*

Material:

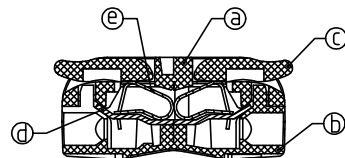
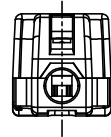
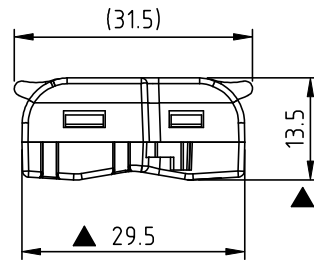
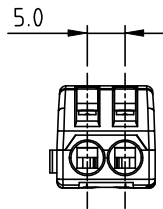
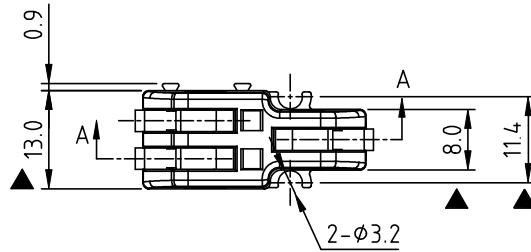
- Item ③ Terminal upper body: PA66
- Item ④ Terminal bottom body: PA66
- Item ① Terminal lever: PA6
- Item ② Terminal Contact: Copper alloy
- Item ⑤ Spring: Stainless,

Electrical:

- Voltage rating: 600 V
- Current rating: 20A
- Wire range:
  - Solid wire: 24-12AWG
  - Stranded wire: 24-12AWG
- Wire strip length: 9 mm
- Operating temperature: -20°C to +105°C
- Assembling temperature: -5°C to +105°C
- Safety Approval:
- Critical dimension: ▲

Part No. EQT21 x x xxxx G

- |                  |                           |
|------------------|---------------------------|
| Body Color       | RoHS compliant (lead<4%)  |
| 1: Orange 橘色     | In copper Alloy           |
| 2: Gray 灰色 (標準色) | 0000: "@" Logo (Standard) |
| 3: Red 紅色        | Lever Color               |
| 4: Yellow 黃色     | 1: Orange 橘色 (標準色)        |
| 5: Green 綠色      | 2: Gray 灰色                |
| 6: Blue 藍色       | 3: Red 紅色                 |
| 7: Brown 棕色      | 4: Yellow 黃色              |
| 8: Black 黑色      | 5: Green 綠色               |
| 9: White 白色      | 6: Blue 藍色                |
| P: Pink 粉紅色      | 7: Brown 棕色               |
| V: Violet 紫色     | 8: Black 黑色               |
|                  | 9: White 白色               |
|                  | P: Pink 粉紅色               |
|                  | V: Violet 紫色              |
|                  | M: Multiple Color         |



Section A-A

**Amphenol**  
**ANYTEK**

**CUSTOMER COPY**

ALL RIGHTS RESERVED. REPRODUCTION OR ISSUE TO THIRD PARTIES IN ANY FORM WHATSOEVER IS NOT PERMITTED WITHOUT WRITTEN AUTHORITY FROM THE PROPRIETOR. PROPERTY OF ANYTEK TECHNOLOGY CO., LTD

TITLE		EQT 2pole terminal block			DWG NO.		8EQT0003	
PART NO.		EQT21xxxxxxG			CUST NO.			
APPROVED	CHECKED	DESIGNED	DRAWN	Tolerance				
		Shao Bo 2024.08.30	Shao Bo 2024.08.30	UNIT: mm		X. ±0.50		
				SCALE: 1:1		X.X ±0.30		
				SHEET: 01/01		X.XX ±0.10		
				REV.: A0		X° ±1°		