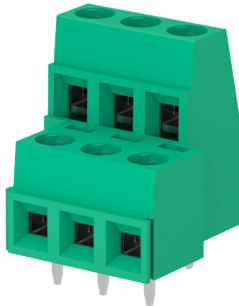


PSB020D1 - Plurima

<https://www.sauro.net/product/PSB020D1>



Number of poles: 4, Clamp tightening, 17.5A, 1mm², 14AWG, 300V, Pitch 5 mm, Modular, Connection Angle 0°, Number of levels: 2, Green (RAL 6032), Soldering technology Wave, UL, VDE, IMQ, CSA

General data

Number of poles	4
Number of levels	2
Sides configuration	Modular
Pitch	5 mm
Voltage	300 V
Current	17.5 A
Housing composition	Monolithic
Wire section	1.5 mm ²
Wire section	30 AWG ÷ 14 AWG
Connection Angle	0°
Available approvals	UL, VDE, IMQ, CSA

Features

Screw dimension	M3
Recommended tightening torque	0.5 Nm
Stripping length	6 mm
Operating temperature range	-40°C ÷ 105°C
Climatic category	-40/105/21 according to EN60068-1
Contact resistance	<15 mOhm
Insulation resistance	>1 GOhm

Certifications

<https://www.sauro.net/product/PSB020D1>

PSB020D1 - Plurima



<https://www.sauro.net/product/PSB020D1>

IMQ (n.ED624)

Rated voltage	250 V		
Nominal current	17.5 A		
Wire section	1.5 mm ²		
Insulating category	I		
Overtoltage category/Pollution degree	III/3	III/2	II/2
Impulse voltage	4kV	4kV	4kV
Rated voltage	300V	300V	600V
Insulation voltage	320V	320V	630V
Maximum temp usage	110		

CSA (n.LR 102896)

Rated voltage	300 V		
Nominal current	15 A		
Wire section	14 AWG		
Tightening torque	6 lbf x in		

VDE (n.40022744 Reg.-Nr. C519)

Rated voltage	250 V		
Nominal current	13.5 A		
Wire section	1 mm ²		
Insulating category	I		
Maximum temp usage	110		

UL (n.E167473)

Usage Group	B	C	D*
Rated voltage	300 V		300 V
Nominal current		13.5 A	
Wire section		16 AWG	
Tightening torque		6 lbf x in	

* These limited ratings are applicable to a terminal block for use in or with industrial control equipment whereby the load on any single circuit of the terminal block does not exceed 15A at 51-150V, 10A at 151-300V, or 5A at 301-600V, or the maximum ampere rating, whichever is less.

Materials

Screw material	Nickel-plated copper alloy
Terminal contact	Nickel and tin on copper alloy
Clamp tightening	Nickel-plated copper alloy
Insulating housing material	PA Polyamide

<https://www.sauro.net/product/PSB020D1>

PSB020D1 - Plurima



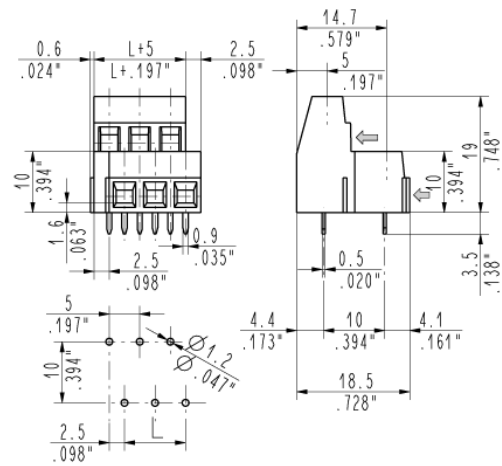
<https://www.sauro.net/product/PSB020D1>

Insulating material group

I (CTI \geq 600V)

Available colors

Green	similar to RAL 6032
Dark green	similar to RAL 6017
Black	similar to RAL 9005
Light gray	similar to RAL 7035
Dark gray	similar to RAL 7040
Orange	similar to RAL 2003
Blue	similar to RAL 5012
Brown	similar to RAL 8028
Yellow	similar to RAL 1018
White	similar to RAL 9001
Red	similar to RAL 3017
Another color	on demand



<https://www.sauro.net/product/PSB020D1>