

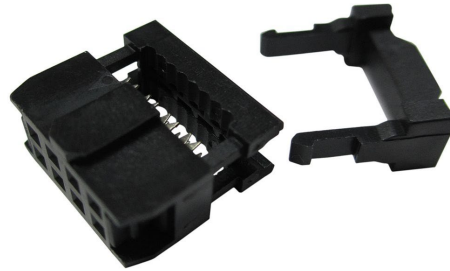
8-Way IDC Connector Socket for Cable Mount, 2-Row

RoHS
Compliant

Stock No.: D2553WVC-208-P0BKG1

FEATURES

- 8 Ways
- 2 Rows
- 2.54mm Pitch



Product Description

This cable mount IDC ribbon cable receptacle connectors come with a 2.54mm pitch. These wire to board IDC 2.54mm ribbon cable receptacle connectors have a black PBT insulator, gold plated copper alloy female socket contacts, a polarizing key and are supplied with additional strain reliefs.

General Specifications

Connector Type	Jack
Number of Contacts	8
Number of Rows	2
Gender	Female
Body Orientation	Straight
Contact Material	Phosphor Bronze
Housing Material	PBT
Colour	Black
Applications	computers connecting drives, cd drives, SSD's and other components

Electrical Specifications

Current Rating	3A
Voltage Rating	AC 1000V
Proof Voltage	1000VDC or AC peak
Termination Method	IDC
Contact Plating	Gold over Nickel Plated
Cable	2.54mm (0.10in) pitch flat cable
Insulator Resistance	1000MOhm min. at DC 500V
Contact Resistance	20MOhm max. at DC 100mA
Dielectric Withstanding Voltage	1000VAC for 1 Minute
Connector System	Wire to Board

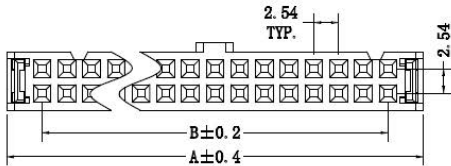
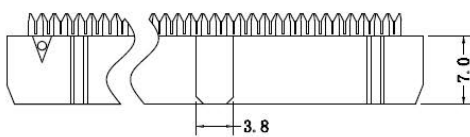
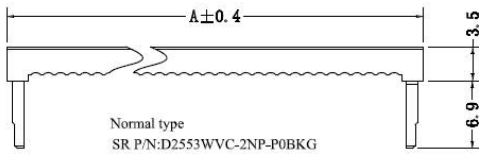
Mechanical Specifications

Pitch	2.54mm
Mounting Type	Cable Mount
Ejector Style	Short latches
Length	14.73mm
Width	7.0mm

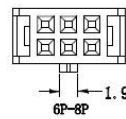
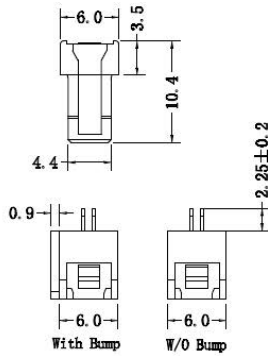
Operation Environment Specifications

Operating Temperature Range	-40°C to 105°C
Minimum Operating Temperature	-40°C
Maximum Operating Temperature	105°C

Product Drawing



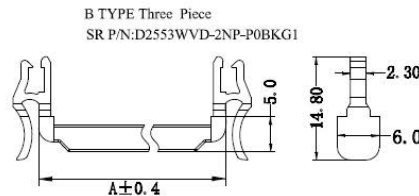
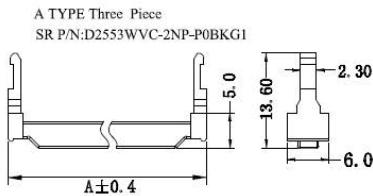
A=2.54*NO of Positions/2+4.70
B=2.54*NO of Positions/2-2.54



SPECIFICATION:
 Current Rating: 3 A.
 Withstanding Voltage: AC 1000V.
 Insulation Resistance: 1000MΩ Min
 Contact Resistance: 20mΩ Max..
 Operating Temperature: -40°C ~ +105°C.

D2553 W V X- 2NP - P0 XX G X
 ① ② ③ ④ ⑤ ⑥ ⑦ ⑧ ⑨

- ① Series No.
- ② Category: W-Wafer
- ③ Welding Board Angle: V- Straight 180°
- ④ Feature Type: C-C type D-D type
- ⑤ Circuit No.: 206-2x3PIN~264-2x32PIN,
- ⑥ Material: P0-PBT, UL94V-0
- ⑦ Color: BK-Black GY-Gray
- ⑧ Plating Method: G-Au Or Sn Over Ni, E-Au 30u"
- ⑨ Options: Blank-Normal type
 1- A TYPE 3 pieces ; 1- B TYPE 3 pieces



Dimensions: Millimeters (Inches)

Part Number Table

Part Number	Description
D2553WVC-208-P0BKG1	8-Way IDC Connector Socket for Cable Mount, 2-Row

Important Notice: This data sheet and its contents (the "Information") belong to the members of the EASE group of companies (the "Group") or are licensed to it. No license is granted for the use of it other than for information purposes in connection with the products to which it relates. No license of any intellectual property rights is granted. The Information is subject to change without notice and replaces all data sheets previously supplied. The Information supplied is believed to be accurate, but the Group assumes no responsibility for its accuracy or completeness, any error in or omission from it or for any use made of it. Users of this data sheet should check for themselves the Information and the suitability of the products for their purpose and not make any assumptions based on information included or omitted. Liability for loss or damage resulting from any reliance on the Information or use of it (including liability resulting from negligence or where the Group was aware of the possibility of such loss or damage arising) is excluded. This will not operate to limit or restrict the Group's liability for death or personal injury resulting from its negligence. EASE is the registered trademark of Ease Electronics Co., Limited 2019.