

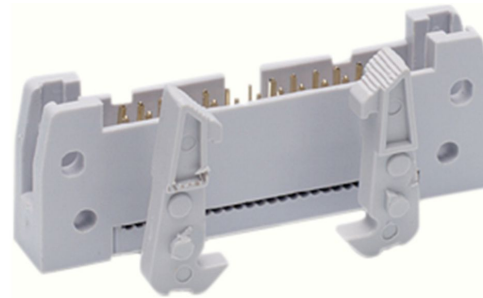
10-Way Connector Plug for Through Hole Mount, 2-Row

RoHS Compliant

Stock No.: D2556WVI-210-P0GYT

FEATURES

- 10 Ways
- 2 Rows
- 2.54mm Pitch



Product Description

The flat cable connector is a mainstream of circuit board connector that comes with new improved design. There are various plugs which are available like space-saving box-type plugs, IDC plugs which can be used for relaying. These connectors come with long locks and straight DIP terminals.

General Specifications

Connector Type	Plug
Number of Contacts	10
Number of Rows	2
Gender	Male
Body Orientation	Straight
Contact Material	Brass
Housing Material	PBT
Colour	Black
Applications	relaying

Electrical Specifications

Current Rating	3A
Voltage Rating	250V
Proof Voltage	1500VDC or AC peak
Termination Method	IDC
Contact Plating	Gold flash
Cable	2.54mm (0.10in) pitch flat cable
Insulator Resistance	1000MOhm min. at DC 500V
Contact Resistance	20MOhm max. at DC 100mA
Dielectric Withstanding Voltage	1000VAC for 1 Minute
Connector System	Wire to Board

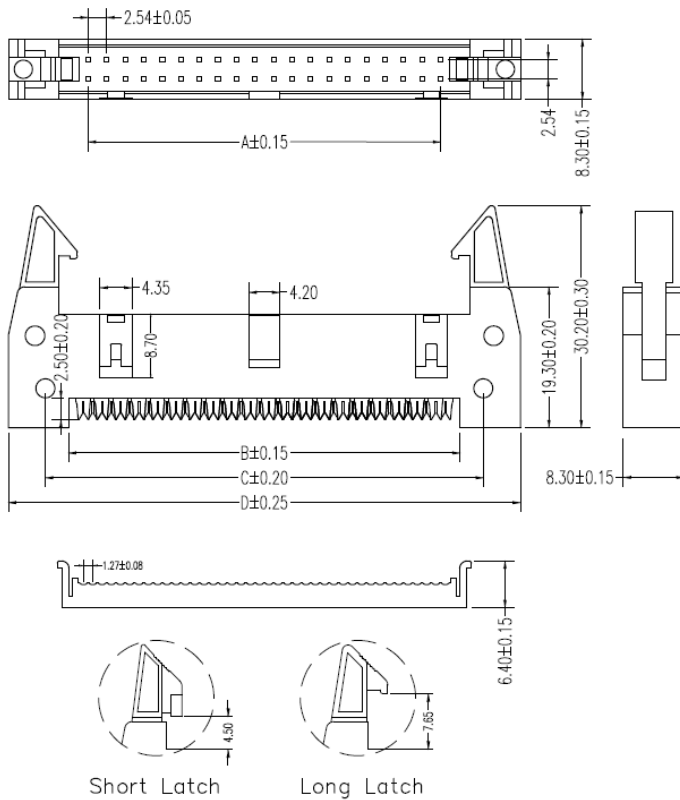
Mechanical Specifications

Pitch	2.54mm
Mounting Type	Through Hole
Ejector Style	Long latches
Length	-
Width	8.4mm

Operation Environment Specifications

Operating Temperature Range	-25°C to 85°C
Minimum Operating Temperature	-25°C
Maximum Operating Temperature	85°C

Product Drawing



■ SPECIFICATIONS :

- Voltage Rating: 250V AC / DC
- Current Rating: 1A AC / DC
- Withstanding Voltage: 500V AC/minute
- Temperature Range: -40°C~+105°C
- Insulation Resistance: 1000MΩ Min.
- Contact Resistance: 20mΩ Max.

■ *Mates with LDZY A2544H series Housing

- Material:
- Wafer: PBT UL94V-0, Black/Grey
- Conductor: Brass/ Gold-Flash over the nickel

D2556 W V X I - 2NP - P0 XX X X
 ① ② ③ ④ ⑤ ⑥ ⑦ ⑧ ⑨ ⑩

- ① Series No.
- ② Category:W-wafer
- ③ Welding Board Angle: V- Straight 180° R-Vertical 90°
- ④ Colloid Feature: Blank-ordinary type, A-...
- ⑤ Soldering Type: I-IDC Type
- ⑥ Circuit No.: 204-2x2PIN~264-2x32PIN
- ⑦ Material: P0-PBT UL94V-0,
- ⑧ Color: BK-Black,GY-Grey
- ⑨ Plating Method: T-Tin-plated, G-Gold-flash
- ⑩ Other Feature: A-Long Latch(7.65);BLANK-Short Latch(4.5)

Dimensions: Millimeters (Inches)

Part Number Table

Part Number	Description
D2556WVI-210-POGYT	10-Way Connector Plug for Through Hole Mount, 2-Row

Important Notice: This data sheet and its contents (the "Information") belong to the members of the EASE group of companies (the "Group") or are licensed to it. No license is granted for the use of it other than for information purposes in connection with the products to which it relates. No license of any intellectual property rights is granted. The Information is subject to change without notice and replaces all data sheets previously supplied. The Information supplied is believed to be accurate, but the Group assumes no responsibility for its accuracy or completeness, any error in or omission from it or for any use made of it. Users of this data sheet should check for themselves the Information and the suitability of the products for their purpose and not make any assumptions based on information included or omitted. Liability for loss or damage resulting from any reliance on the Information or use of it (including liability resulting from negligence or where the Group was aware of the possibility of such loss or damage arising) is excluded. This will not operate to limit or restrict the Group's liability for death or personal injury resulting from its negligence. EASE is the registered trademark of Ease Electronics Co., Limited 2019.