

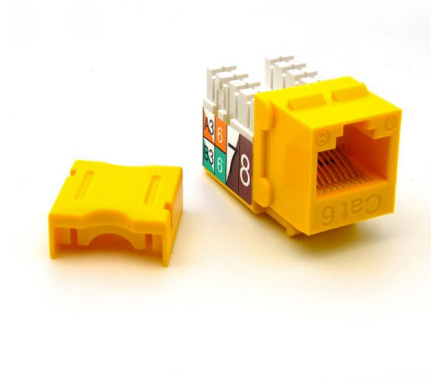
**Insert Modular Jack 8p8c (RJ45, Ethernet)
To IDC, Pressdown, Punchdown Block
Yellow**

**RoHS
Compliant**

Stock No.: RJ45-6JU-90YW

FEATURES

- Unshielded
- RJ45/F to 110-type IDC
- 90 Degree



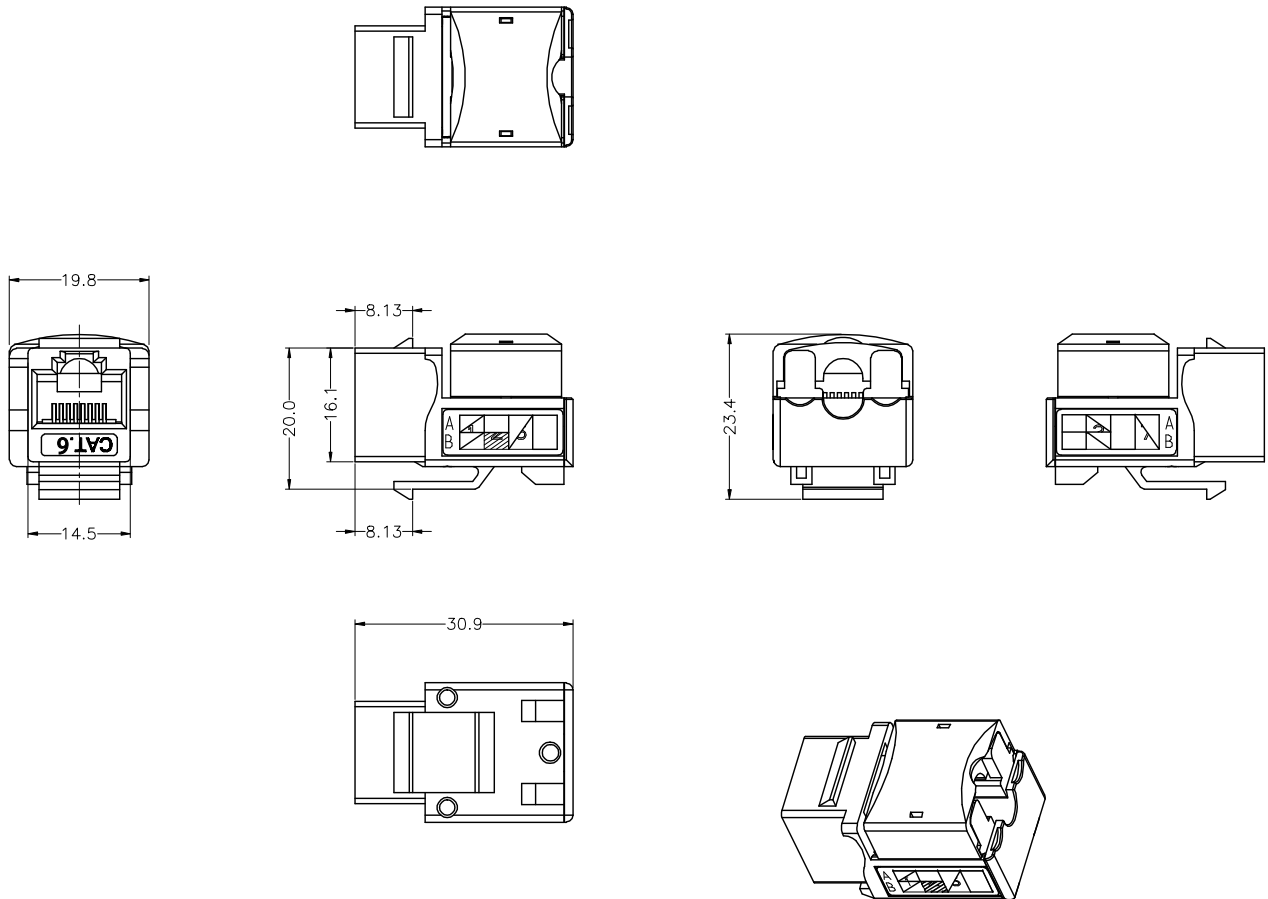
Product Description

Cat.6 RJ45 Keystone Jack 110-type IDC 90 Degree Punch Down is 8-position 8-conductor (8P8C) and is designed for computer networking.

General Specifications

Attribute	Value
Category	6
Mounting Type	Patch Panel, Faceplates/Wall Plates, Surface Mount Boxes
Configuration	8-Position 8-Conductor (8P8C), RJ45
Wiring Code	TIA/EIA-568 B.2
Adapter End	RJ45 Female, Tin plated
Adapter End	110-type IDC 90 Degree Punch Down, Nickel Plated
Contact Material	Phosphor Bronze
Specifications	-
Shielding	Unshielded
Color	Yellow
Operation Temperature	-0°C TO 70°C
Storage Temperature	-40°C TO 85°C
Wire Gauge	23~24AWG
Cable Jacket Diameter	N/A
Current Rating (Amps)	1.5A

Product Drawing



Part Number Table

Part Number	Description
RJ45-6JU-90BK	Insert Modular Jack 8p8c (RJ45, Ethernet) To IDC, Pressdown, Punchdown Block Black
RJ45-6JU-90BL	Insert Modular Jack 8p8c (RJ45, Ethernet) To IDC, Pressdown, Punchdown Block Blue
RJ45-6JU-90GY	Insert Modular Jack 8p8c (RJ45, Ethernet) To IDC, Pressdown, Punchdown Block Gray
RJ45-6JU-90GN	Insert Modular Jack 8p8c (RJ45, Ethernet) To IDC, Pressdown, Punchdown Block Green
RJ45-6JU-90IV	Insert Modular Jack 8p8c (RJ45, Ethernet) To IDC, Pressdown, Punchdown Block Ivory
RJ45-6JU-90OR	Insert Modular Jack 8p8c (RJ45, Ethernet) To IDC, Pressdown, Punchdown Block Orange
RJ45-6JU-90RD	Insert Modular Jack 8p8c (RJ45, Ethernet) To IDC, Pressdown, Punchdown Block Red
RJ45-6JU-90WT	Insert Modular Jack 8p8c (RJ45, Ethernet) To IDC, Pressdown, Punchdown Block White
RJ45-6JU-90YW	Insert Modular Jack 8p8c (RJ45, Ethernet) To IDC, Pressdown, Punchdown Block Yellow

Important Notice: This data sheet and its contents (the "Information") belong to the members of the EASE group of companies (the "Group") or are licensed to it. No license is granted for the use of it other than for information purposes in connection with the products to which it relates. No license of any intellectual property rights is granted. The Information is subject to change without notice and replaces all data sheets previously supplied. The Information supplied is believed to be accurate, but the Group assumes no responsibility for its accuracy or completeness, any error in or omission from it or for any use made of it. Users of this data sheet should check for themselves the Information and the suitability of the products for their purpose and not make any assumptions based on information included or omitted. Liability for loss or damage resulting from any reliance on the Information or use of it (including liability resulting from negligence or where the Group was aware of the possibility of such loss or damage arising) is excluded. This will not operate to limit or restrict the Group's liability for death or personal injury resulting from its negligence. EASE is the registered trademark of Ease Electronics Co., Limited 2019.