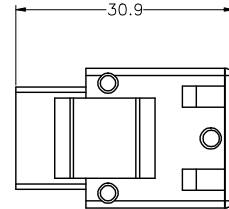
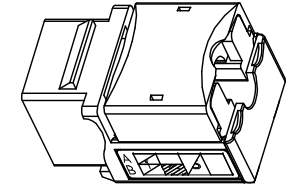
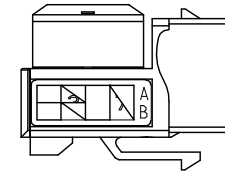
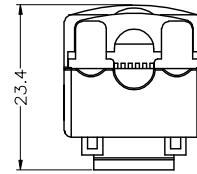
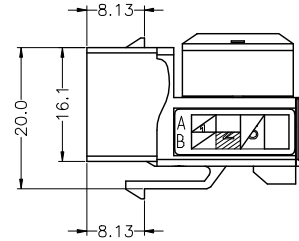
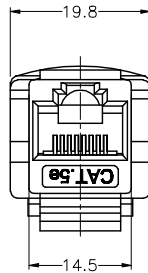


THE INFORMATION CONTAINED IN THIS DRAWING IS THE SOLE PROPERTY OF EASE ELECTRONICS. ANY REPRODUCTION IN PART OR WHOLE WITHOUT THE WRITTEN PERMISSION OF EASE ELECTRONICS IS PROHIBITED.

REV	DESCRIPTION	DATE	APPROVED
A	INITIAL RELEASE	6/7/25	CHILLY. L



### Part Number Table

PART NUMBER	DESCRIPTION	DWG. NO.
RJ45-5JU-90BK	Cat.5e RJ45 110 Type 90° Keystone Jack, Black	J0110
RJ45-5JU-90BL	Cat.5e RJ45 110 Type 90° Keystone Jack, Blue	J0111
RJ45-5JU-90GN	Cat.5e RJ45 110 Type 90° Keystone Jack, Green	J0112
RJ45-5JU-90GY	Cat.5e RJ45 110 Type 90° Keystone Jack, Gray	J0113
RJ45-5JU-90IV	Cat.5e RJ45 110 Type 90° Keystone Jack, Ivory	J0114
RJ45-5JU-90OR	Cat.5e RJ45 110 Type 90° Keystone Jack, Orange	J0115
RJ45-5JU-90RD	Cat.5e RJ45 110 Type 90° Keystone Jack, Red	J0116
RJ45-5JU-90WT	Cat.5e RJ45 110 Type 90° Keystone Jack, White	J0117
RJ45-5JU-90YW	Cat.5e RJ45 110 Type 90° Keystone Jack, Yellow	J0118

#### MATERIAL

Keystone Jack Housing: PC  
 Insert Material: PBT  
 PCB Material: FR-4 Thickness: 1.6mm  
 Contact Material: Phosphor Bronze, Stamp Pin T=0.3mm  
 IDC Contact Material: Phosphor Bronze T=0.5mm with Nickel Plating

#### PHYSICAL CHARACTERISTICS

Operating Temperature Range: -0 °C to 70 °C  
 Storage Temperature Range: -40 °C to 85 °C  
 Humidity: 10% ~ 90% RH  
 Conform to TIA/EIA 568B.2  
 Wire: AWG 24 -26

#### ELECTRICAL

Voltage Rating: 125 VAC RMS.  
 Current Rating: 1.5 AMP.  
 Contact Resistance: 100 Milliohms Max.  
 Insulation Resistance: 1000 Megohms Min @ 500 VDC.  
 Dielectric Strength: 750 VAC RMS 60Hz, 1 Min.  
 Conform to ANSI/TIA/EIA-568B.2

#### Mounting Type

Patch Panel, Faceplates/Wall Plates, Surface Mount Boxes

UNIT: MM

UNLESS OTHERWISE SPECIFIED, DIMENSIONS ARE IN INCHES [mm]  OVERALL CABLE LENGTH TOLERANCE: $\leq 12$ [305] = +1 [25] / -0 $>12$ [305] $\leq 60$ [1524] = +2 [51] / -0 $>60$ [1524] $\leq 120$ [3048] = +4 [102] / -0 $>120$ [3048] $\leq 300$ [7620] = +6 [152] / -0 $>300$ [7620] = +5% / -0%  ALL OTHER DIMENSIONAL TOLERANCES: .X = .3 .XX = .15	APPROVALS DRAWN BY LUKE. L CHECKED BY TILLY. H APPROVED BY CHILLY. L	DATE 5/7/2025 5/7/2025 5/7/2025	 <b>EASE</b> Ease Electronics Co., Limited <small>Zone A, 2nd Floor, Bldg A, No.45, Qianjin 3rd Rd, Tanzhou, 528467          Zhongshan, Guangdong, China. +86-756-5888810</small>	PART NUMBER <h2>RJ45-5JU-90RD</h2>		
	CONFIGURATION DETAILS OF UNDIMENSIONED FEATURES MAY VARY				PRODUCT DESCRIPTION <h3>Cat.5e RJ45 110 Type 90° Keystone Jack, Red</h3>	
	PROJECTION 	COLOR VARIATIONS MAY OCCUR	ID <b>J</b>	SERIES NO. <b>RJ45-J</b>	DWG. NO. <b>J0116</b>	REV. <b>J</b>
	REF	SCALE: NONE		CAD FILE: J0116		SHEET 1 OF 1