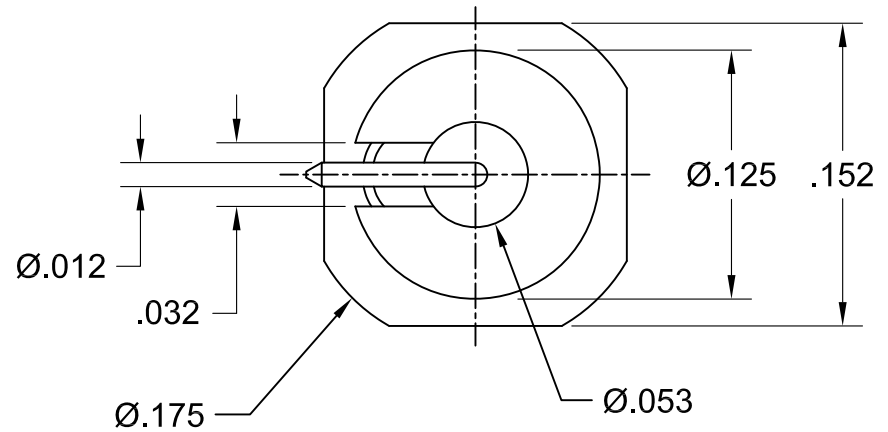
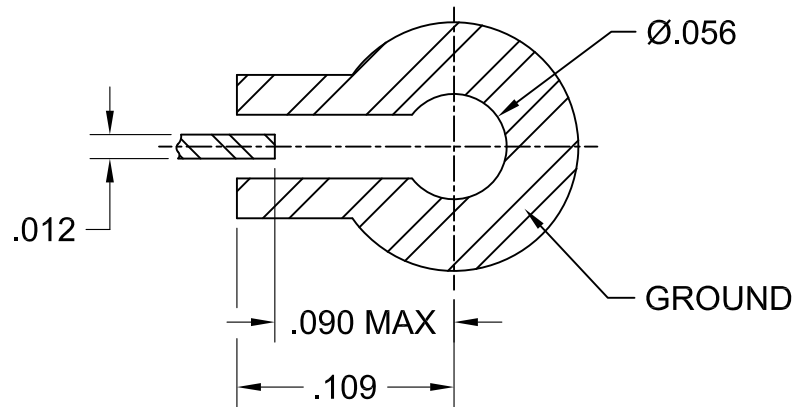
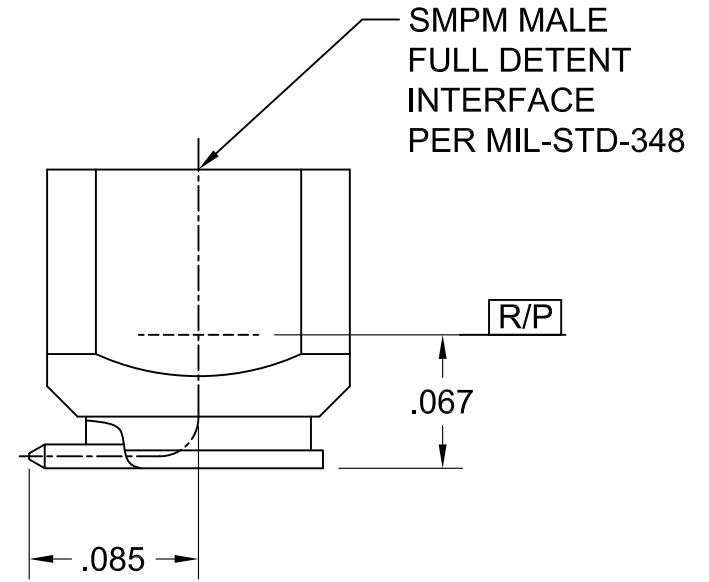
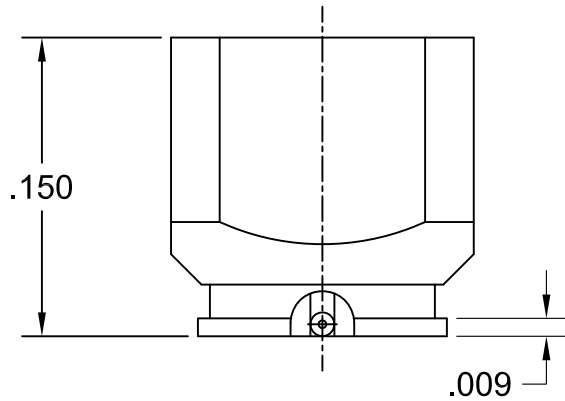


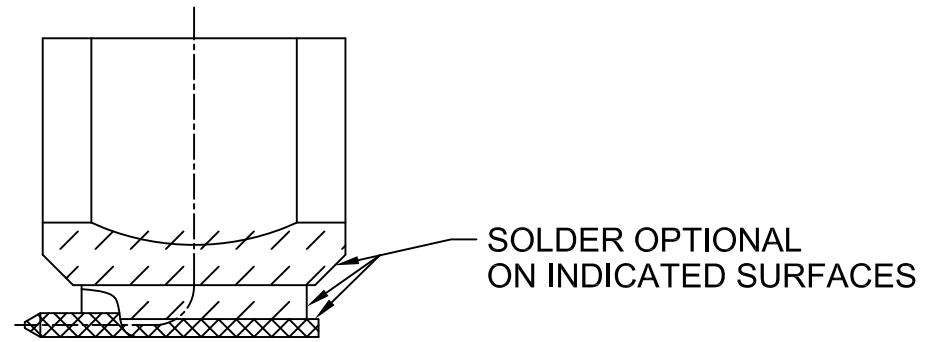
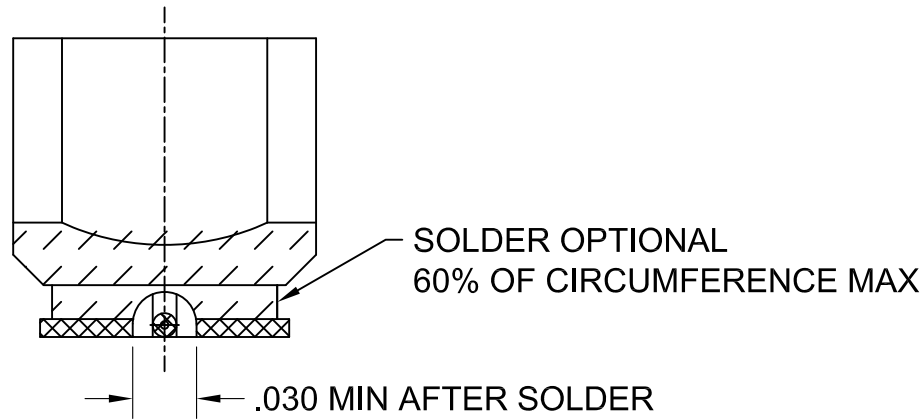
OUTLINE DRAWING



COMPONENT	MATERIAL & FINISH		MICRO-MODE PRODUCTS, INC. <i>The Reliable Connection to the Future</i>		El Cajon, CA 92020 ph 619.449.3844 www.micromode.com	CAGE CODE 15907
BODY & CONTACT	BeCu, ASTM B196, UNS C17300	GOLD PLATE, MIL-DTL-45204, TYPE 1, GRADE C, CLASS 1 NICKEL PLATE PER SAE AMS-C-26074 50 MICROINCHES MINIMUM	ASSY PROCEDURES: N/A		SMPM MALE, FULL DETENT SURFACE MOUNT, SOLDER FINISH	
INSULATOR	PEEK 1000 ASTM F2026		INSERTION/EXTRACTION TOOL: N/A		PART NO. MSSP-13520	
SOLDER	Sn60 OR Sn63		SHEET 1 OF 2	4-18-18 . MP	REVISION C	

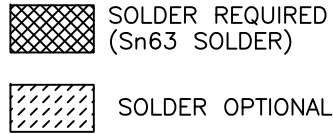
OUTLINE DRAWING

# OUTLINE DRAWING



SOLDER OPTIONAL IN AIRLINE

Ø.014 MAX  
AFTER SOLDER



OPERATING FREQUENCY	DC TO 40 GHz
VSWR	1.40:1 MAX - DC TO 40 GHz
INSERTION LOSS	0.12 √f (GHz)
RF HIGH POT	200 Vrms MIN @ 5 MHz
INSULATION RESISTANCE	5,000 MEGOHMS MINIMUM
DWV	325 VRMS

RF LEAKAGE	-80dB TO 3 GHz -65dB 3-26.5 GHz
IMPEDANCE	50 OHMS NOMINAL
CENTER/OUTER CONTACT RESISTANCE	6.0/2.0 mOHMS
OPERATING TEMPERATURE	-65°C TO +165°C
NON-OPERATING TEMPERATURE	-65°C TO +165°C

FORCE TO ENGAGE	8.0 LBS MAXIMUM
FORCE TO DISENGAGE	3.0 LBS MINIMUM
DURABILITY	100 CYCLES MINIMUM
VIBRATION	MIL-STD-202, METHOD 204, CONDITION D
SHOCK	MIL-STD-202, METHOD 213, CONDITION I
THERMAL SHOCK	MIL-STD-202, METHOD 107, CONDITION B



MICRO-MODE PRODUCTS, INC.  
*The Reliable Connection to the Future*

El Cajon, CA 92020  
ph 619.449.3844  
www.micromode.com

CAGE CODE  
15907

ASSY PROCEDURES: N/A

INSERTION/EXTRACTION TOOL: N/A

SMPM MALE, FULL DETENT  
SURFACE MOUNT, SOLDER FINISH

PART NO.  
MSSP-13520

REVISION  
C

SHEET 2 OF 2

4-18-18 . MP

OUTLINE DRAWING