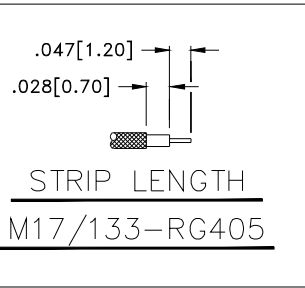
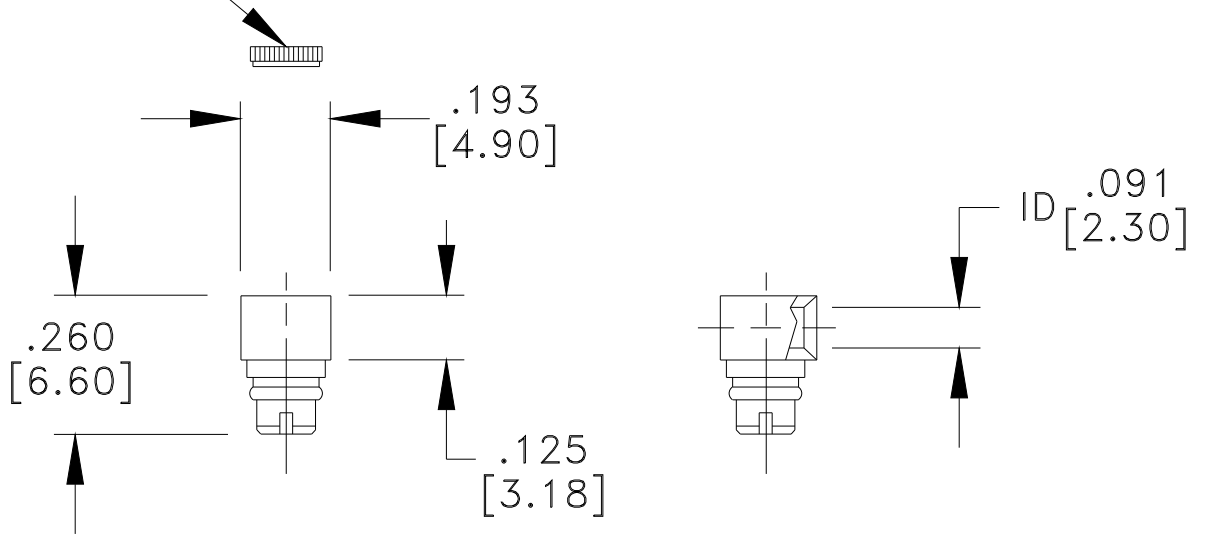


RevNo	Revision note	Date	Checked
1	Initial Release	101515	GC



PRESS-FIT CAP



RoHS Compliant

**MATERIAL**

BODY	BRASS/BeCu
BODY PLATING	GOLD
CONTACT	BeCu
CONTACT PLATING	GOLD
DIELECTRIC	TEFLON (PTFE)
CAP	BRASS
CAP PLATING	GOLD

50 Ohm IMPEDANCE  
500V PEAK VOLTAGE RATING  
TEMPERATURE RANGE: -55°C TO +155°C  
INTERFACE DIMENSIONS SIMILAR TO MIL-C-39012

MILLIMETER WAVE TECHNOLOGIES 6501 W. FRYE ROAD, #23 CHANDLER, AZ 85226		SMP FEMALE RIGHT ANGLE SOLDER CABLE END for .086" SEMI-RIGID 50 OHMS	
Designed by N. JAIN	Checked by W. CANON	Approved by A. LEE	File name MWP-8001-GA-086
TOLERANCES DIMENSIONS ARE IN INCHES UNLESS OTHERWISE SPECIFIED DECIMALS ANGULAR .XX ± .02 ± .06 .XXX ± .005 DO NOT SCALE THIS DRAWING		ALL DIMENSIONS ON THIS DRAWING ARE FOR REFERENCE PURPOSES ONLY AND ARE SUBJECT TO CHANGE.	
		REV. 1	Scale NONE
		DATE 101515	Sheet 1 of 1
TITLE <b>MWP-8001-GA-086</b>			