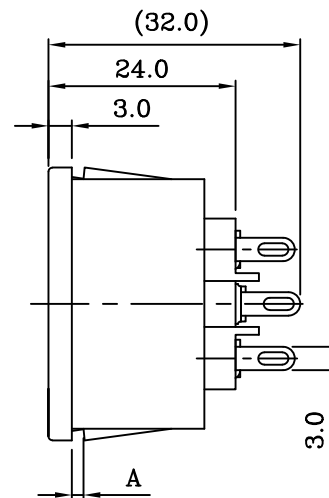
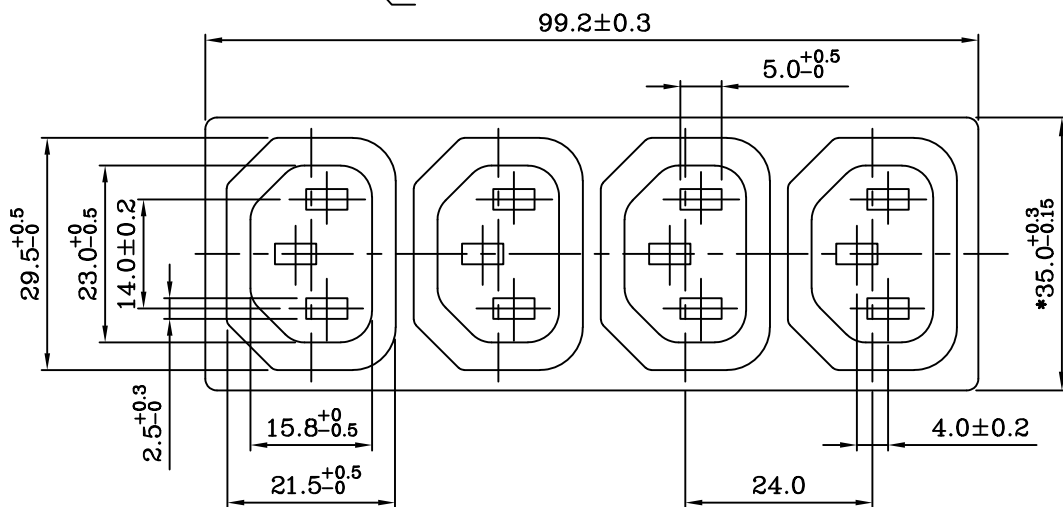
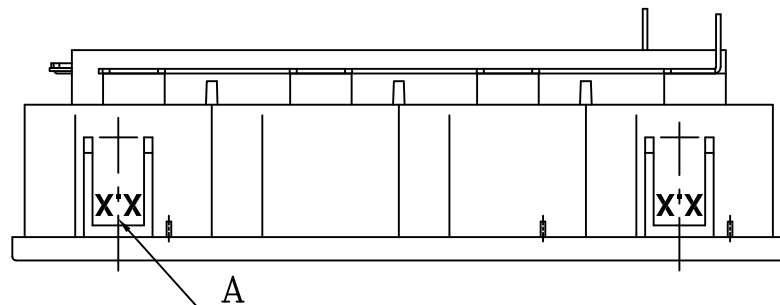


**PANEL CUT-OUT**



XX	A
10	1.0
12	1.2
15	1.5
17	1.7
20	2.0
25	2.5



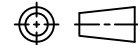
**SPECIFICATION:**

1. Insulation Resistance: Over 100MΩ at 500V DC.
2. Dielectric strength: 2000V AC 1 Minute.
3. Body Material: Thermoplastic 94V-2~V-0.
4. Withdrawal force : 10N~50N.

Rating:AC 10A 250V	
Mark	Safety Regulation
	VDE
	ENEC
	CCC
Rating:AC 15A 250V	
Mark	Safety Regulation
	CULUS



富灣股份有限公司  
RICH BAY COMPANY LTD.  
台北縣樹林市東興街57號  
NO. 57, Tung Hsing St., Shu-Lin Town,  
Taipei Hsien, Taiwan, R. O. C.  
TEL:886-2-86867781~4 FAX:886-2-86867780  
http://www.richbay.com.tw



DRAWN BY



UNIT

mm

UNIT QTY

1

SCALE

1:1

TOLERANCE

X.XX±0.1  
XX.XX±0.2  
XXX.XX±0.3

ID NO

241205A01

DESCRIPTION

PRODUCT NO.

R-302G4 (00) XX

INTERIM NO.

NEW NO.

REV

F