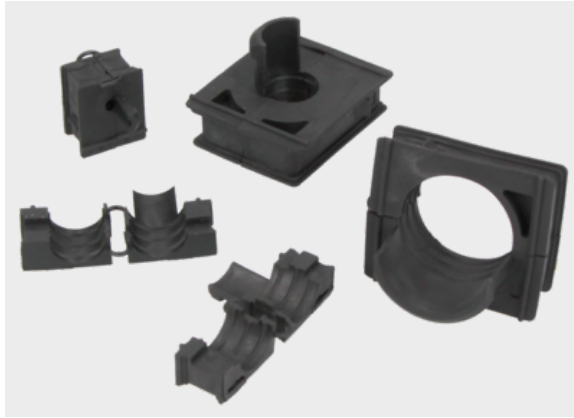




Cable entry grommet type KDT/ZE+



Product information

Cable entry grommet for pre-assembled cables in connection with cable entry system KDL/E+

- Approved for railway technology (except special grommets)
- The grommets are retrofitted around the cable.
- Strain relief even better with simple cable ties
- Thermal stability: -40 °C – +100 °C
- Fire classification: V0 (special grommets: HB)
- RoHS compliant
- UV resistant
- Made in Germany



Information, conformities and approvals



Article	Order No.	Color	for Ø	For opening	No. of openings	Flexa-T old	PU
			mm	small / large		Conduit	
KDT/ZE 2xASI double grommet	87121280	Black					10
BST KDT/ZE ASI	87121281	Black					10
Grommet, small							
KDT/ZE+ 03	87121310	Black	3 - 4	yes / no			10
KDT/ZE+ 04	87121312	Black	4 - 5	yes / no			10
KDT/ZE+ 05	87121314	Black	5 - 6	yes / no			10
KDT/ZE+ 06	87121316	Black	6 - 7	yes / no			10
KDT/ZE+ 07	87121318	Black	7 - 8	yes / no			10
KDT/ZE+ 08	87121320	Black	8 - 9	yes / no			10
KDT/ZE+ 09	87121322	Black	9 - 10	yes / no			10
KDT/ZE+ 10	87121324	Black	10 - 11	yes / no			10
KDT/ZE+ 11	87121326	Black	11 - 12	yes / no			10
KDT/ZE+ 12	87121328	Black	12 - 13	yes / no			10



Cable entry grommet type KDT/ZE+

Article	Order No.	Color	for Ø	For opening	No. of openings	Flexa-T old	PU
			mm	small / large		Conduit	
KDT/ZE+ 13	87121330	Black	13 - 14	yes / no			10
KDT/ZE+ 14	87121332	Black	14 - 15	yes / no			10
KDT/ZE+ 15	87121334	Black	15 - 16	yes / no			10
Grommet, large							
KDT/ZE+ 16	87121336	Black	16 - 17	no / yes			10
KDT/ZE+ 17	87121338	Black	17 - 18	no / yes			10
KDT/ZE+ 18	87121340	Black	18 - 19	no / yes			10
KDT/ZE+ 19	87121342	Black	19 - 20	no / yes			10
KDT/ZE+ 20	87121344	Black	20 - 21	no / yes			10
KDT/ZE+ 21	87121346	Black	21 - 22	no / yes			10
KDT/ZE+ 22	87121348	Black	22 - 23	no / yes			10
KDT/ZE+ 23	87121350	Black	23 - 24	no / yes			10
KDT/ZE+ 24	87121352	Black	24 - 25	no / yes			10
KDT/ZE+ 25	87121354	Black	25 - 26	no / yes			10
KDT/ZE+ 26	87121356	Black	26 - 27	no / yes			10
KDT/ZE+ 27	87121358	Black	27 - 28	no / yes			10
KDT/ZE+ 28	87121360	Black	28 - 29	no / yes			10
KDT/ZE+ 29	87121362	Black	29 - 30	no / yes			10
KDT/ZE+ 30	87121364	Black	30 - 31	no / yes			10
KDT/ZE+ 31	87121366	Black	31 - 32	no / yes			10
Variable cable grommet (Protection class IP 42)							
KDT/VE 7-10 1)	87121274	Black	7 - 10	yes / no	1		10
Multi-line grommet 2-line							
KDT/ZE 2x4 double grommet 2)	87121284	Black	4	yes / no	2		10



Cable entry grommet type KDT/ZE+

Article	Order No.	Color	for Ø	For opening	No. of openings	Flexa-T old	PU
			mm	small / large		Conduit	
KDT/ZE 2x5 double grommet 2)	87121286	Black	5	yes / no	2		10
KDT/ZE 2x6 double grommet 2)	87121288	Black	6	yes / no	2		10
KDT/ZE 2x7 double grommet 2)	87121290	Black	7	yes / no	2		10
KDT/ZE 2x8 double grommet 2)	87121291	Black	8	yes / no	2		10
Dummy grommet							
BTK/E+ Dummy grommet small	87121380	Black					10
BTG/ZE+ dummy grommet large	87121370	Black		no / yes			10
BTK/E	87121266	Black		yes / no	0		10
Multi-line grommet 4-line							
KDT/ZE 4x2 quadruple grommet 2)	87121292	Black	2	yes / no	4		10
KDT/ZE 4x3 quadruple grommet 2)	87121293	Black	3	yes / no	4		10
KDT/ZE 4x4 quadruple grommet 2)	87121294	Black	4	yes / no	4		10
KDT/ZE 4x5 quadruple grommet 2)	87121295	Black	5	yes / no	4		10
KDT/ZE 4x6 quadruple grommet 2)	87121296	Black	6	yes / no	4		10
Multiple grommet - only for cables without connectors							
KDT/ZE+ flex 03-13	87121372	Black	3 - 13	yes / no			4
KDT/ZE+ flex 13-30	87121374	Black	13 - 30	no / yes			4
Conduit grommet							
SDT/ZE 07 1)	87174250	Black		yes / no	1	M10/P07	10
SDT/ZE 09 1)	87174252	Black		yes / no	1	M12/P09	10
SDT/ZE 11 1)	87174254	Black		yes / no	1	M16/P11	10
SDT/ZE 16 1)	87174256	Black		no / yes	1	M20/P16	10
SDT/ZE 21 1)	87174258	Black		no / yes	1	M25/P21	10



Cable entry grommet type KDT/ZE+

Article	Order No.	Color	for Ø mm	For opening small / large	No. of openings	Flexa-T old Conduit	PU pcs.
Plug grommet (compatible with Murrelektronik, Balluff and ifm)							
KDT/ZE+ M12	87121382	Black		yes / no			10
ASI grommet (for ASI cable)							
KDT/ZE ASI 1)	87121282	Black		yes / no	1		10
Adapter grommet (adapter for small grommet)							
ATG/E 1)	87121268	Black		no / yes	1		10
1) no UR-approval 2) no UR-approval / unused openings can be closed off with Type VST sealing plugs							

Thermal properties



Temperature / temperature range
-40 °C - 100 °C

Fire properties



Fire classification
acc. to UL94: V0



Fire properties as per EN 45545-2
C.I.T. R22 / R23 :HL3
Ds (max.) R22 / R23 :HL3
LO1 R22 / R23 :HL3

Technical information



According to ISO 4892-2

Conformity



RoHS (EC Directive 2011/65/EU)

Approvals and operating permits



EU railway approval



Cable entry grommet type KDT/ZE+

Approvals and operating permits



CSA approval



ECOLAB approval



UL Type 12



General information



Made in Germany