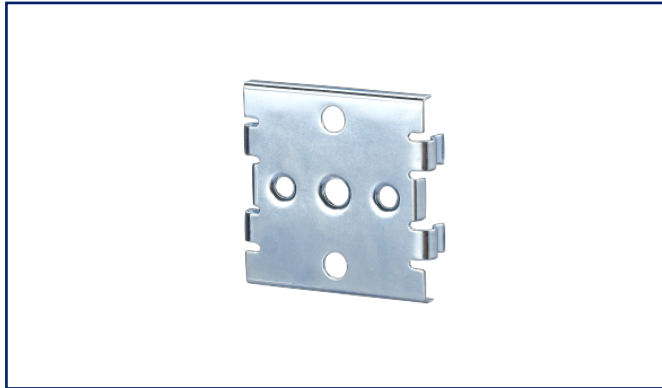
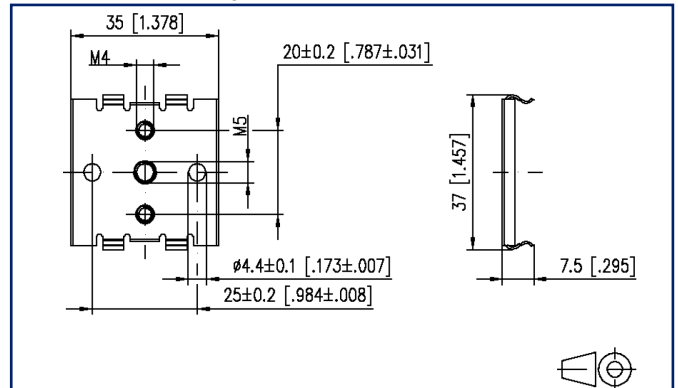


Data sheet
DIN rail adapter mini

Illustrations



Dimensional drawing



See enlarged drawings at the end of document

Product specification

- to fasten heavy devices on a top hat rail (TH35)
- fastening screws are not included in the delivery



P | Cabling

Data sheet DIN rail adapter mini

Page 2/4

P/N
1308990111-I
EAN 4250184112105
2023/03/30
Version: M

Technical Data

General Data

Mechanical measurement according to MICE	M1
Ingress measurement according to MICE	I1
Climatic measurement according to MICE	C1
Electromagnetic measurement according to MICE	E3
Design	DIN rail adapter
Mounting style	Accessories
Color	metallike
Dimensions	
Dimension (L x W x H)	7.5 mm x 35 mm x 37 mm
Dimension (L x W x H)	0.295 in. x 1.378 in. x 1.457 in.

Materials and material properties

Halogen free	yes
RoHS	compliant

Classifications

ETIM 5.0	EC000119
ETIM 6.0	EC000119
ETIM 7.0	EC000119
ETIM 8.0	EC000119
ETIM 9.0	EC000119

Packing details

Type of packaging	10 pc(s) / plastic bag
Packaging unit - Weight (gram)	70 g
Packaging unit - Weight (pound)	0.15 lb
Packaging dimension	160 mm x 100 mm x 380 mm
Packaging dimension	6.299 in. x 3.937 in. x 14.961 in.

Accessories from

P/N	Designation
130861-0202-E	Modul surface mount housing 2 port pure white, unequipped
130861-0202KE	Keystone surface mount housing 2 port pure white, unequipped
130861-0302-E	Modul surface mount housing 3 port pure white, unequipped
130861-0302KE	Keystone surface mount housing 3 port pure white, unequipped
130861-0402-E	Modul surface mount housing 4 port pure white, unequipped
130861-0402KE	Keystone surface mount housing 4 port pure white, unequipped
130861-0602-E	Modul surface mount housing 6 port pure white, unequipped
130861-0602KE	Keystone surface mount housing 6 port pure white, unequipped
130861-0802-E	Modul surface mount housing 8 port pure white, unequipped
130861-0802KE	Keystone surface mount housing 8 port pure white, unequipped
130861-1202-E	Modul surface mount housing 12 port pure white, unequipped
130861-1202KE	Keystone surface mount housing 12 port pure white, unequipped
130861-1602-E	Modul surface mount housing 16 port pure white, unequipped
130861-1602KE	Keystone surface mount housing 16 port pure white, unequipped
130861-2402-E	Modul surface mount housing 2x12 port pure white, unequipped
130861-2402KE	Keystone surface mount housing 2x12 port pure white, unequipped

© 2023 METZ CONNECT - Technische Änderungen vorbehalten! Subject to modifications! Sous réserve de modifications techniques!

P | Cabling

Data sheet

DIN rail adapter mini

Page 4/4

P/N

1308990111-I

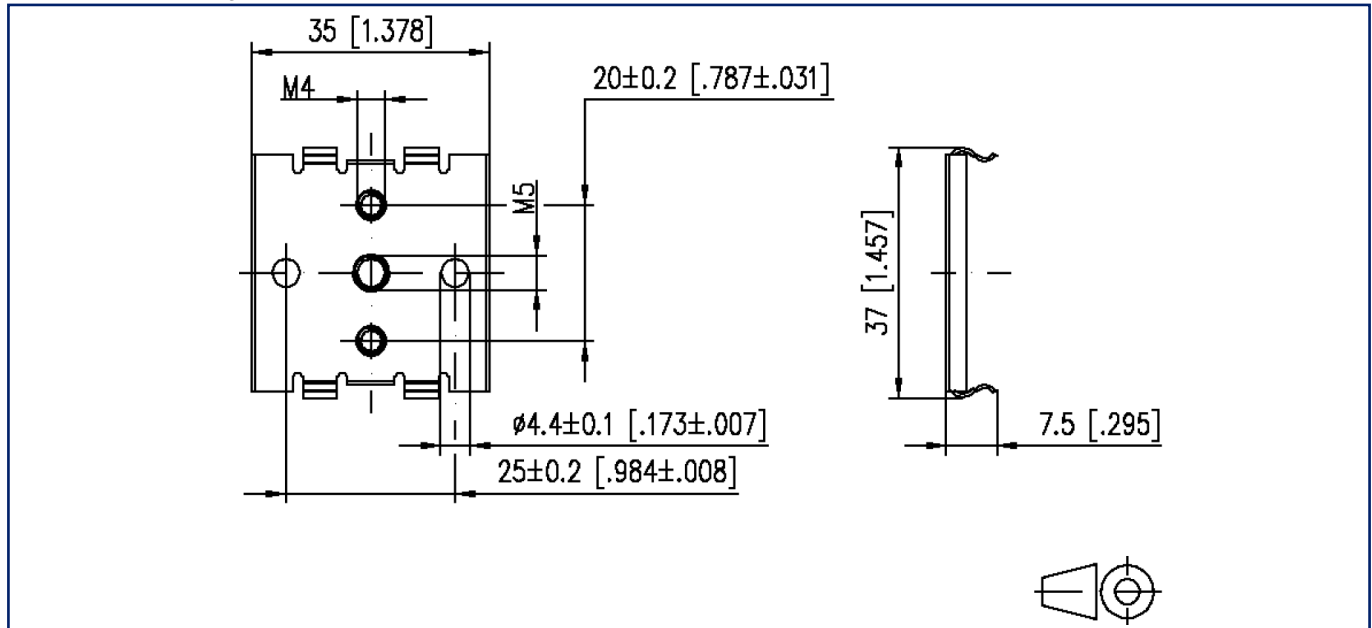
EAN 4250184112105

2023/03/30

Version: M

Illustrations

Dimensional drawing



© 2023 METZ CONNECT - Technische Änderungen vorbehalten! Subject to modifications! Sous réserve de modifications techniques!

